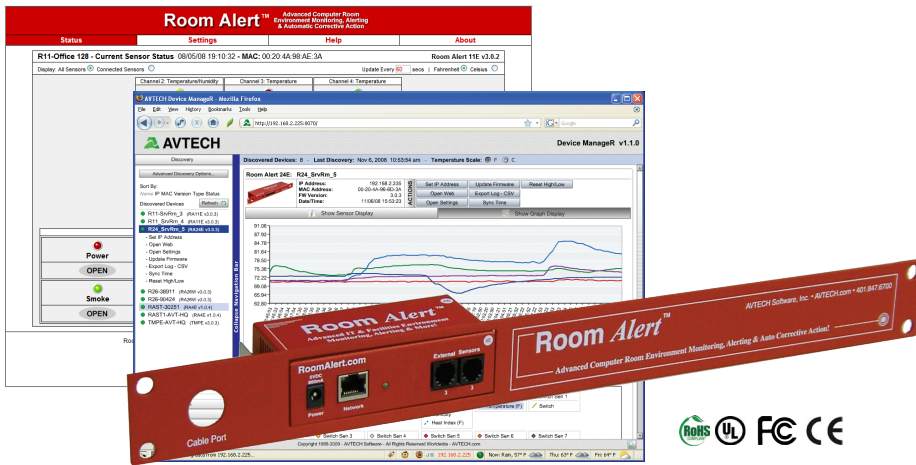


# Room Alert® 11E

“Advanced Physical Environment Monitoring,  
Alerting & Automatic Corrective Action”



Starting At Just...

**\$495**

RA11E-TH1-WAS (Standard \$495)  
RA11E-TH1-RAS (Rack Mount \$515)

## Advanced Features, Extreme Reliability & Huge Value

- Easy Ethernet ‘Plug & Play’ setup for immediate IT & facilities environment monitoring.
- Includes a built-in sensor for digital temperature.
- Includes an external Digital Temperature & Humidity Sensor and an external Power Sensor.
- Includes ports for 2 digital sensors and 8 switch sensors or dry contacts.
- Offers advanced alerting by email, email-to-SMS, SNMP, webpage update and more.
- Use Room Alert 11E’s built-in web server, Device Manager software (*included FREE*) or any SNMP application to monitor unlimited units across your network.
- The Room Alert 11E package allows real-time sensor status, data logging, graphing, advanced alerting, Fahrenheit/Celsius, high/low watermarks and much more.
- Add a ‘Plugin Bundle’ to Device Manager to enhance the capabilities of the Room Alert 11E. Available plugins allow users to Shutdown or Reboot Windows systems, Log Off users and/or Run Scripts/Commands, alert via Dial Out actions and more, remotely across the network.
- Use Room Alert 11E with or without a host system. That’s right... No PC Required! This saves money, improves reliability and provides options. Install in minutes today, enjoy ‘Peace Of Mind’ tonight!

**5 Steps To Prevent IT Disaster**  
1) Install Monitors for Immediate Detection  
2) Auto Alerting to Responsible IT Staff  
3) Auto Shutdown & Action Procedures  
4) Fast & Appropriate Response by Staff  
5) Review/Analyze/Plan Future Prevention

\* Includes mounting brackets for 1U rack, 0U wall, or standard.

120415

INCLUDES: Room Alert 11E, built-in Digital Temperature Sensor, external Digital Temperature & Humidity Sensor, external Power Sensor, 2 Digital Sensor Ports (RJ-11), 8 Switch Sensor Channels, Ethernet Connection (RJ-45), 10’ Ethernet cable, 2 5V Power Adapters (110/240V, RoHS), built-in web server, SNMP Trap & Query enabled, bundled Device Manager software license, download access, printed *Room Alert 11E User’s Guide & Reference Manual*, 12 months of *Maintenance Support & Update Service (MSUS)*, ‘30-Day Satisfaction Guarantee’ and more.  
Rack mount bracket, additional sensors & optional software plugin packages are available separately.