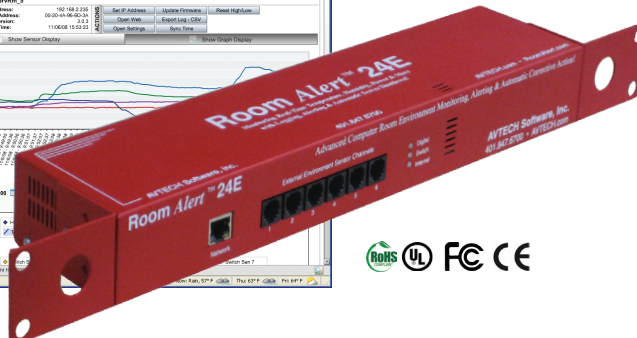
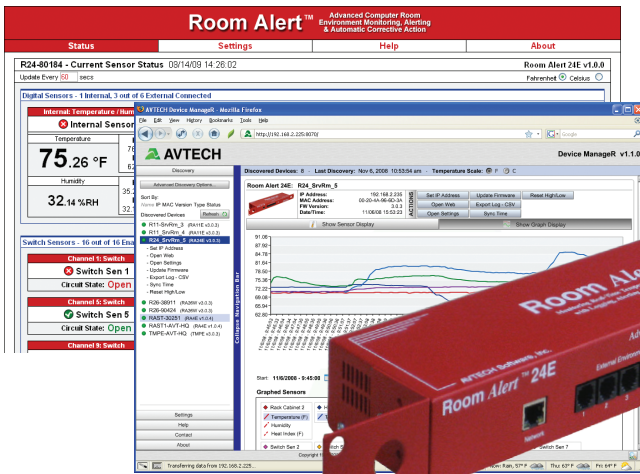


Room Alert[®] 24E

“Advanced Physical Environment Monitoring,
Alerting & Automatic Corrective Action ”



Order Now For...

\$595

RA24E-TH1-RAS

Large Capacity, Extreme Reliability & Huge Value

- Easy Ethernet ‘Plug & Play’ setup for immediate IT & facilities environment monitoring.
- Includes built-in digital temperature and humidity sensors, Device Manager software and “PUSH” technology.
- Includes an external Digital Temperature Sensor, an external Room Entry Sensor and an external Main Power Sensor.
- Includes ports for 6 digital sensors and 16 switch sensors or dry contacts.
- Offers advanced alerting by email, email-to-SMS, SNMP, webpage update and more.
- Use Room Alert 24E’s built-in web server, Device Manager software (*included FREE*) or any SNMP application to monitor unlimited units across your network.
- The Room Alert 24E package allows real-time sensor status, data logging, graphing, advanced alerting, Fahrenheit/Celsius, high/low watermarks and much more.
- Add a ‘Plugin Bundle’ to Device Manager to enhance the capabilities of the Room Alert 24E. Available plugins allow users to Shutdown or Reboot Windows systems, Log Off users and/or Run Scripts/Commands, alert via Dial Out actions and more, remotely across the network.
- Use Room Alert 24E with or without a host system. That’s right... No PC Required! This saves money, improves reliability and provides options. Install in minutes today, enjoy ‘Peace Of Mind’ tonight!

5 Steps To Prevent EM Disaster
1) Install Monitors for Immediate Detection
2) Auto Alerting to Responsible IT Staff
3) Auto Shutdown & Action Procedures
4) Fast & Appropriate Response by Staff
5) Review/Analyze/Plan Future Prevention

Manufacturer: AVTECH Software inc.

AVT 130401.02

INCLUDES: Room Alert 24E Rack Unit (1U 19”), built-in Digital Temperature Sensor, built-in Digital Humidity Sensor, external Main Power Sensor, external Digital Temperature Sensor, external Room Entry Sensor, 6 external Digital Sensor Ports (RJ-11), 16 Switch Sensor Channels, Factory Reset Button, LED Sensor Status Indicators, rotating mounting wings, PUSH technology, Ethernet Connection (RJ-45), Expansion Port (RJ-45), 10’ Ethernet cable, 2 5V Power Adapters (110/240V, RoHS), built-in web server, SNMP Trap & Query enabled, bundled Device Manager software license, installation & resource media, printed *Room Alert 24E User’s Guide & Reference Manual*, 12 months of *Maintenance Support & Update Service (MSUS)*, ‘30-Day Satisfaction Guarantee’ and special offers on other products. Optional sensors, voice or GSM modem, software plugin packages available.