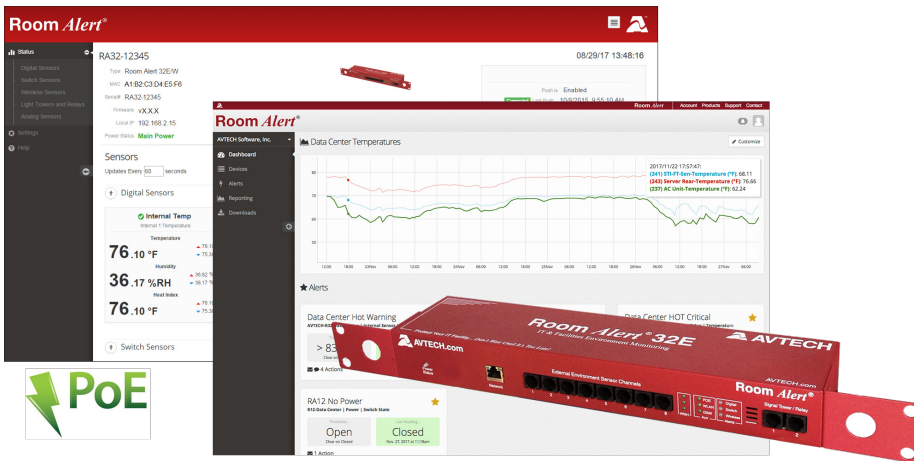


Room Alert® 32E

“Advanced Physical Environment Monitoring,
Alerting & Automatic Corrective Action.”



Order Now For...

\$895

Room Alert 32E RA32E-TH1-RAS



Advanced Features, Large Capacity & Supports Light Towers

- Easy Ethernet ‘Plug & Play’ setup for immediate IT & facilities environment monitoring.
- Includes built-in digital temperature & humidity sensors, power sensor, Device Manager and “PUSH” technology.
- Includes Power Over Ethernet (PoE), a built-in Uninterruptible Power Supply (UPS), and an external Digital Active Power Sensor which monitors both power and temperature.
- Includes ports for 8 digital sensors and 16 switch sensors, as well as additional ports to add relays, light towers, low voltage sensors and more.
- Offers advanced alerting by email, email-to-SMS, SNMP, webpage update and more.
- Use Room Alert 32E’s built-in web server, Device Manager software (included), RoomAlert.com account (included), or SNMP to monitor across your network.
- The Room Alert 32E package allows real-time sensor status, data logging, graphing, advanced alerting, Fahrenheit/Celsius, high/low watermarks and much more.
- Use the included ‘Windows Plugin Bundle’ with Device Manager to Shutdown or Reboot Windows systems, Log Off users and/or Run Scripts/Commands and more, across the network.
- Use Room Alert 32E with or without a host system. That’s right... No PC Required! This saves money, improves reliability and provides options. Install in minutes today, enjoy ‘Peace Of Mind’ tonight!

5 Steps To Prevent EM Disaster
1) Install Monitors for Immediate Detection
2) Auto Alerting to Responsible IT Staff
3) Auto Shutdown & Action Procedures
4) Fast & Appropriate Response by Staff
5) Review/Analyze/Plan Future Prevention

Manufacturer: AVTECH Software, Inc.

AVT-171010.09

INCLUDES: Room Alert 32E Rack Unit (1U 19”), built-in Digital Temperature Sensor, built-in Digital Humidity Sensor, built-in Main Power Sensor, external Digital Active Power Sensor, 8 external Digital Sensor Ports (RJ-11), 16 Switch Sensor Channels, Power On/Off Button, Factory Reset Button, Power Over Ethernet (PoE), LED Sensor Status indicators, WLAN Activity indicators, built-in Uninterruptible Power Supply (UPS), rotating mounting wings, PUSH technology, Ethernet Connection (RJ-45), 2 External Light Tower or Relay Switch Sensor Connection Ports, 2 External Relay Output Ports (0.3A@125VAC / 1A@24VDC), 2 0-5V Analog Sensor Input Ports, 10’ Ethernet cable, 5V Power Adapter (110/240V, RoHS), built-in web server, SNMP Trap & Query enabled, SNMP MIB, bundled Device Manager software license, Windows Plugin Bundle, downloadable *Room Alert User Manual*, 1 year RoomAlert.com Personal account upgrade, ‘30-Day Satisfaction Guarantee’. Optional sensors, Light Tower Adapters (LTAs), Relay Switch Sensors, voice or GSM modem & software plugin packages available.