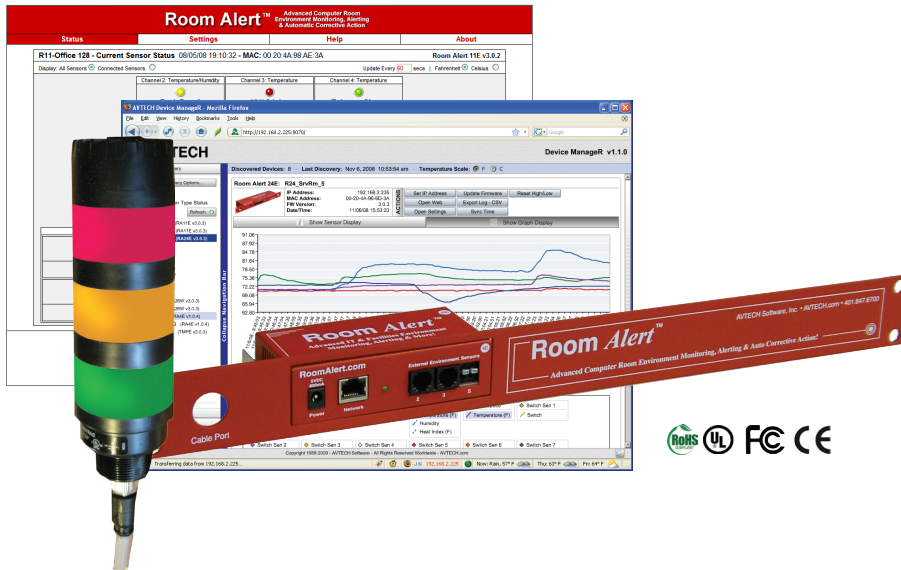


Room Alert® 4E w/Light Tower & Audio

“Advanced Physical Environment Monitoring with
Visual Alerting, Audible Alerting, & Automatic Corrective Action ”



Starting At Just...

\$525

RASTAX-RYG-BAS (Standard \$525)
RASTAX-RYG-WAS (Wall Mount \$535)
RASTAX-RYG-RAS (Rack Mount \$555)

Advanced Features, Extreme Reliability & Low Cost

- Easy Ethernet ‘Plug & Play’ setup for immediate IT & facilities environment monitoring.
- Includes a built-in sensor for digital temperature.
- Includes an external Digital Temperature Sensor and Light Tower w/Audio.
- Includes ports for 2 digital sensors, 1 switch sensor or dry contact and an external Light Tower w/Audio.
- Offers advanced alerting by email, email-to-SMS, SNMP, webpage update and more.
- Use Room Alert 4E’s built-in web server, Device Manager software (included FREE) or any SNMP application to monitor unlimited units across your network.
- The Room Alert 4E package allows real-time sensor status, data logging, graphing, advanced alerting, Fahrenheit/Celsius, high/low watermarks and much more.
- Add a ‘Plugin Bundle’ to Device Manager to enhance the capabilities of the Room Alert 4E. Available plugins allow users to Shutdown or Reboot Windows systems, Log Off users and/or Run Scripts/Commands, alert via Dial Out actions and more, remotely across the network.
- Use Room Alert 4E with or without a host system. That’s right... No PC Required! This saves money, improves reliability and provides options. Install in minutes today, enjoy ‘Peace Of Mind’ tonight!

5 Steps To Prevent IT Disaster

- 1) Install Monitors for Immediate Detection
- 2) Auto Alerting to Responsible IT Staff
- 3) Auto Shutdown & Action Procedures
- 4) Fast & Appropriate Response by Staff
- 5) Review/Analyze/Plan Future Prevention

120201

INCLUDES: Room Alert 4E, built-in Digital Temperature Sensor, external Digital Temperature Sensor, 2 Digital Sensor Ports (RJ-11), 1 Switch Sensor Channel, Ethernet Connection (RJ-45), external Light Tower w/Audio, Light Tower Connection Port, 10’ Ethernet cable, 5V Power Adapter (110/240V, RoHS), built-in web server, SNMP Trap & Query enabled, bundled Device Manager software license, download access, printed *Room Alert 4E User’s Guide & Reference Manual*, 12 months of *Maintenance Support & Update Service (MSUS)*, ‘30-Day Satisfaction Guarantee’ and more. Rack mount bracket, additional sensors & optional software plugin packages are available separately.