

PRODUCT CATALOG

Spring 2024



Room Alert Monitors Protect Your Facility Against ...

- High Heat
- Extreme Cold
- High Humidity
- Heat Index
- Flood / Water Leaks
- Power Loss
- Extreme Weather
- Smoke / Fire
- Unauthorized Entry
- Open / Closed Doors
- Dew Point
- And More!



ONLINE
ONLINE
ONLINE
ONLINE

TIME 19:52

HDD1
HDD2
HDD3

FAN1
FAN2
FAN3

POWER HIGH
MID
LOW

10GBPS BACKUP 0%

LAN1
LAN2
LAN3
LAN4

360°
PROTECTION

Room Alert is... Environment
Monitoring Made Easy!

RATE 10GBPS BACKUP 0%

ONLINE

TIME 19:52



PANDORA



The World Leader in Proactive Environment Monitoring Since 1988.

Environment factors can cause major problems for your critical facilities and assets. Temperature, humidity, flood, power, smoke, and other environmental conditions can negatively affect data centers, warehouses, manufacturing, and facilities of all types. A slight change in temperature or humidity, or the introduction of water or smoke, can spell disaster for valuable equipment, property, people, or the business.

AVTECH has spent more than 35 years providing solutions that proactively monitor the environment and help warn of changes that might cause problems. Room Alert products are a critical part of your business continuity plan and are helping protect facilities in 187 of 196 countries, 98% of the Fortune 1000, the United Nations, Pentagon, FBI, and many thousands of other facilities worldwide. Use Room Alert to monitor, log, graph, map, alert, and respond. You can trust Room Alert to protect your important assets and facilities.

Built in the USA, Available Worldwide

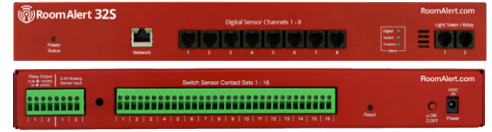
Room Alert monitors, sensors and software are designed and supported from our headquarters in Warren, Rhode Island. All our products are manufactured in the United States in ISO 9001 certified facilities to ensure the highest quality. Users can monitor Room Alert using our online Room Alert Account dashboard, our local Room Alert Manager software, free Room Alert app, directly from Room Alert firmware, or any professional third-party SNMP monitoring platform.

Patented and Award Winning

Every Room Alert user has access to our patented Monitor360™ technology as part of our Room Alert Account portal. Take your environment monitoring and facility management to the next level by using Monitor360 to build virtual sensors and alerts that provide deeper insight into your facility. Room Alert users will not only know that they are receiving an alert, they will know exactly why conditions in their facility are in an alarm state, allowing them to respond quickly and more appropriately to minimize downtime and damage.

Room Alert is a secure, award-winning platform that is designed to be ready to protect your facility within minutes of installing it. Our countless online resources, product specialists and support team are here to assist with whatever monitoring needs you may have.

Room Alert protects people, property, and productivity to provide Peace of Mind.



Room Alert 32S



Starts at **\$1395**

RA32S-DAP-RAS

The Room Alert 32S is our flagship model and monitors temperature, humidity, heat index, dew point and power right out of the box. It also includes a built-in Mini UPS in the event of power loss. Security features include SNMP v1/v2c/v3, HTTPS, 2048-bit encryption and more. With the capacity to monitor 32+ sensors, the Room Alert 32S can handle any facility's environmental needs.

The Room Alert 32S is available in four different package configurations to help you get the most out of your proactive environment monitoring. Each package is designed to maximize monitoring capabilities based on the type and size of your facility, and will help you monitor the most critical factors that could cause downtime and damage to your organization. Save money and maximize your investment with Room Alert bundle packages!

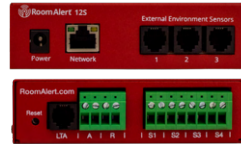


Products Included	Responder	Guardian	Essentials	Foundation
Room Alert 32S	1	1	1	1
Digital Temperature Sensor (25')	1	1	1	1
Digital Temp/Humidity Sensor (25')	2	2	2	1
Digital Temp & Air Flow Sensor	2	2	2	
Flood Sensor w/8' Cable		1	1	
Flood Sensor w/24' Cable	1			
Digital Active Power (10')	2	2	1	
Room Entry Sensor	4	2	1	
Flood Sensor (Spot)	1			
Power Sensor	1			
Light Tower & LTA	1	1		
Flood Protect & Control Kit (Small)	2	1		
iBoot-IO	1			
Total Items Included	19	13	9	3
Bundle Price	\$2895	\$2495	\$1995	\$1395
Savings Over List Price	21%	19%	17%	10%

INCLUDES

Room Alert 32S monitor (1U 19"), built-in Digital Temperature, Humidity, Dew Point, Heat Index, and Power Sensors, 8 Digital Sensor Ports (RJ-11), 16 Switch Sensor Channels, Power On/Off Button, Factory Reset Button, Power Over Ethernet (PoE), built-in Uninterruptible Power Supply (UPS), rotating mounting wings, PUSH technology, Ethernet Connection (RJ-45), 2 Light Tower & Relay Adapter Ports, 2 Relay Output Ports (0.3A@125VAC / 1A@24VDC), 2 Analog Sensor Input Ports (0-5V), 10' Ethernet cable, 5V Power Adapter (110/240V, RoHS), built-in web server, SNMP v1/v2c/v3, HTTPS, 2048-bit encryption, SNMP Trap & Query enabled, SNMP MIB, PDF Room Alert User's Guide & Reference Manual, Non-Expiring RoomAlert.com Account, 1 year Professional Account upgrade, Room Alert Manager software available on Professional tier or higher, Lifetime Support, Lifetime Firmware Updates, 3 year limited warranty from date of purchase. Additional external sensors included based on packages listed above. Optional sensors, Mini UPS, service upgrades, Light Tower & Relay Adapter (LTA), Light Tower or Relay Switch Sensor, GSM modem & more available.





Room Alert 12SR

Starts at \$795

RA12S-DAP-RAS

The Room Alert 12SR is our midrange monitor offering security features that include SNMP v1/v2c/v3, HTTPS, 2048-bit encryption and more. It monitors temperature and has capacity for 12+ sensors, and also offers additional dedicated ports to toggle electrical devices on/off. Available in wall mount (Room Alert 12S) or rack mount (Room Alert 12SR) versions, this is the perfect monitor for mid-sized spaces.

The Room Alert 12SR is available in four different package configurations to help you get the most out of your proactive environment monitoring. Each package is designed to maximize monitoring capabilities based on the type and size of your facility, and will help you monitor the most critical factors that could cause downtime and damage to your organization. Save money and maximize your investment with Room Alert bundle packages!



Products Included	Responder	Guardian	Essentials	Foundation
Room Alert 12SR	1	1	1	1
Digital Temp/Humidity Sensor (25')	1	1	1	1
Digital Temp & Air Flow Sensor	1	1	1	
Flood Sensor w/8' Cable			1	
Flood Sensor w/24' Cable	1	1		
Digital Active Power (10')	1	1	1	
Room Entry Sensor	2	1	1	
MUPS Sensor	1			
Light Tower & LTA	1	1		
Flood Protect & Control Kit (Small)	2	1		
iBoot-IO	1			
Total Items Included	12	8	6	2
Bundle Price	\$1845	\$1595	\$1045	\$795
Savings Over List Price	22%	19%	16%	9%

INCLUDES

Room Alert 12SR monitor, built-in Digital Temperature Sensor, 3 Digital Sensor Ports (RJ-11), 4 Switch Sensor Channels, Factory Reset Button, Power Over Ethernet (PoE), PUSH technology, Ethernet Connection (RJ-45), Light Tower & Relay Adapter Port, Relay Output Port (0.3A@125VAC / 1A@24VDC), Analog Sensor Input Port (0-5V), 10' Ethernet cable, 5V Power Adapter (110/240V, RoHS), built-in web server, SNMP v1/v2c/v3, HTTPS, 2048-bit encryption, SNMP Trap & Query enabled, SNMP MIB, PDF Room Alert User's Guide & Reference Manual, Non-Expiring RoomAlert.com Account, 1 year Professional Account upgrade, Room Alert Manager software available on Professional tier or higher, Lifetime Support, Lifetime Firmware Updates, 3 year limited warranty from date of purchase. Additional external sensors included based on packages listed above. Optional sensors, Mini UPS, service upgrades, Light Tower & Relay Adapter (LTA), Light Tower or Relay Switch Sensor, GSM modem & more available.





Room Alert 12S

The Room Alert 12S is our midrange monitor offering security features that include SNMP v1/v2c/v3, HTTPS, 2048-bit encryption and more. It monitors temperature and has capacity for 12+ sensors, and also offers additional dedicated ports to toggle electrical devices on/off. This is the perfect monitor for mid-sized spaces. Need your device rack mounted for your server rack? Consider the Room Alert 12SR.



\$775

RA12E-TH1-WAS



- Monitor via online Room Alert Account dashboard, included Room Alert Manager software, or any professional third-party SNMP platform.
- Provides 3 digital ports, 4 switch sensor ports, 1 analog sensor port, 1 relay output port, and 1 Light Tower & Relay adaptor port.
- Integrate the device into your preferred SNMP program over SNMP v3. (SNMP v1 traps and SNMP v2c also available).

INCLUDES

Room Alert 12S monitor, built-in Digital Temperature Sensor, external 25' Digital Temperature & Humidity Sensor, 3 Digital Sensor Ports (RJ-11), 4 Switch Sensor Channels, Factory Reset Button, Power Over Ethernet (PoE), PUSH technology, Ethernet Connection (RJ-45), Light Tower & Relay Adapter Port, Relay Output Port (0.3A@125VAC / 1A@24VDC), Analog Sensor Input Port (0-5V), 10' Ethernet cable, 5V Power Adapter (110/240V, RoHS), built-in web server, SNMP Trap & Query enabled, SNMP MIB, PDF Room Alert User's Guide & Reference Manual, Non-Expiring RoomAlert.com Account, 1 Year of RoomAlert.com Personal account access with free 90 day Professional upgrade, Room Alert Manager software available on Professional tier or higher, Lifetime Support, Lifetime Firmware Updates, 1 year limited warranty from date of purchase. Optional sensors, Mini UPS, service upgrades, Light Tower & Relay Adapter (LTA), Light Tower or Relay Adaptor, GSM modem & more available.



Room Alert 3S

The Room Alert 3S is our most economical monitor with the smallest footprint that offers advanced security features such as SNMP v1/v2c/v3, HTTPS, 2048-bit encryption and more. With built-in temperature monitoring and two additional sensor ports, this is the perfect monitor for telecom closets, small rooms, remote locations, or any other place where space is minimal or at a premium.



\$295

RA3S-ES0-BAS



- Monitor via online Room Alert Account dashboard, included Room Alert Manager software, or any professional third-party SNMP platform.
- Push data to the Room Alert Account online dashboard over HTTPS, and send alert notifications directly from the device over your TLS email server.
- Integrate the device into your preferred SNMP program over SNMP v3. (SNMP v1 traps and SNMP v2c also available).

INCLUDES

Room Alert 3S ID Box (0U, 3-5/8" L x 1-3/4" W x 1" H), built-in Digital Temperature Sensor, 1 external Digital Sensor Port (RJ-11), 1 Switch Sensor Channel, Factory Reset Button, Power over Ethernet (PoE), PUSH technology, Ethernet Connection (RJ-45), 10' Ethernet cable, 5V Power Adapter (110/240V, RoHS), built-in web server, SNMP v1/v2c/v3, HTTPS, 2048-bit encryption, SNMP Trap & Query enabled, SNMP MIB, PDF Room Alert User's Guide & Reference Manual, Non-Expiring RoomAlert.com Account, 1 Year Professional Account upgrade, Room Alert Manager software available on Professional tier or higher, Lifetime Support, Lifetime Firmware Updates, 3 year limited warranty from date of purchase. Optional sensors, Mini UPS, service upgrades, Light Tower & Relay Adapter, GSM modem & more available.



Room Alert Mobile App Stay Informed - Anywhere, Anytime

The Room Alert app makes it easier and more convenient than ever to monitor your environment from any mobile device. The Room Alert app is free to download on Android and Apple app stores and is available for users worldwide.

Simply log in with the same credentials used for logging into your Room Alert Account. For customers on Enterprise service or higher, use SAML/SSO to sign in. Your view in the app will mirror your online Room Alert Account service and pull the same information, ensuring a seamless and user-friendly experience consistent with the Room Alert Account web interface. Here, you have the ability to:

- View up-to-date and accurate sensor readings across all of your Room Alert hardware
- View configured alerts
- View alert details
- View a comprehensive list of your alert history
- Acknowledge and respond to alerts and coordinate in real-time with other team members

Our mobile-first mindset rounds out the Room Alert ecosystem to offer consistency in the look and functionality of Room Alert, whether you are using the mobile app, Room Alert Account in your web browser, Room Alert Manager software locally on your network, or the built-in web interface on every Room Alert monitor.



Room Alert Account with Monitor360

Room Alert Account Facility Insight Like Never Before

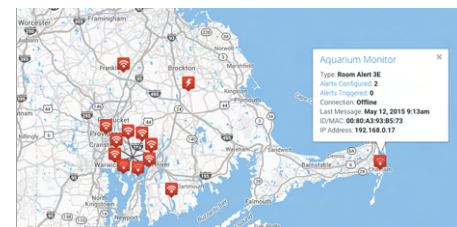
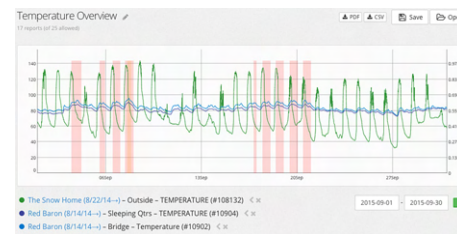
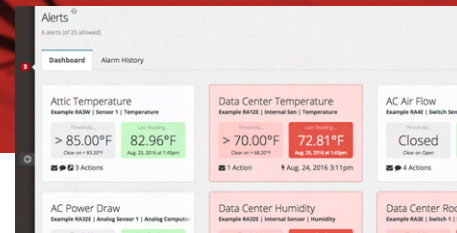
Room Alert takes environmental monitoring to new levels with patented Monitor360 technology available only in our Room Alert Account online dashboard. Other monitors can tell you what is happening... Room Alert Account and Monitor360 help tell you *why*.

Take Advantage of Virtual Sensors and Alerts

Monitor360 technology allows Room Alert users to create virtual sensors and alerts using existing monitors and sensors in multiple combinations to provide you with customized alerts across multiple sensors, monitors, and even locations.

Take Immediate Action To Prevent Downtime

The online Room Alert Account dashboard, available to all users, provides you with unparalleled insight into the conditions of your facilities to keep you protected. Get immediate alerts through all modern methods, including push notifications via our free Room Alert app, to keep your people, property, and productivity protected at all times.



Alert ID	Location	Sensor	Status	Created	Last Message
1000000001	Red Baron	Temperature (10904)	Alert	2015-09-30 10:00:00	Temperature (10904) is 72.81°F
1000000002	Red Baron	Temperature (10904)	Alert	2015-09-30 10:00:00	Temperature (10904) is 72.81°F
1000000003	Red Baron	Temperature (10904)	Alert	2015-09-30 10:00:00	Temperature (10904) is 72.81°F

Room Alert Manager Unlimited Local Monitoring

Users who prefer a local software management platform can use our Room Alert Manager software for unlimited management, monitoring, alerting, logging, reporting, graphing and more.

Feature Rich Software

Room Alert Manager provides a wealth of options for Room Alert users, including:

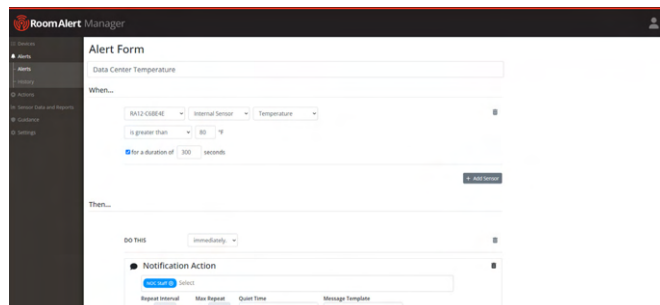
- User-friendly interface
- Multiple threshold alerts
- Customized alert durations
- Firmware updates across the network
- Hardware groupings for easier management
- User hierarchies, scheduling, mapping
- Server shutdown actions
- And so much more!

Manage Devices Across Multiple Locations

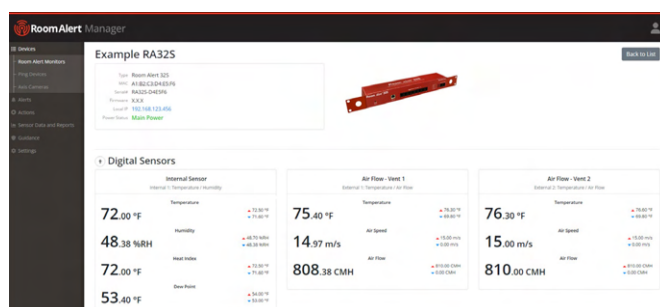
Room Alert Manager is the optimal choice for users in industries that require local software management solutions. Users can monitor and manage Room Alert installations in multiple locations with one central platform, or combine Room Alert Manager with our online Room Alert Account dashboard and free Room Alert mobile app for the ultimate in facility environmental monitoring coverage.

"Within the first two weeks of installing our first Room Alert, we were able to identify and subsequently replace a failing A/C unit before the network gear overheated and failed; all thanks to automated email notifications. With as reliable and sturdy as these devices have been, we plan to implement many more throughout the facility!"

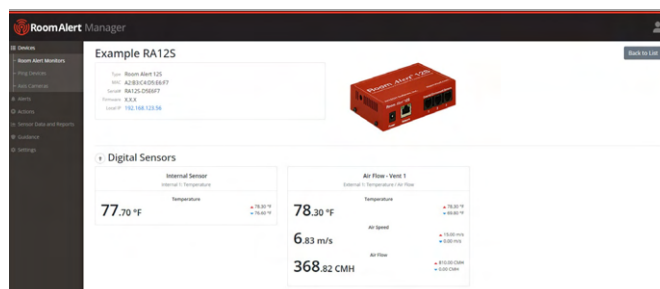
Rob D., Sr Network Administrator



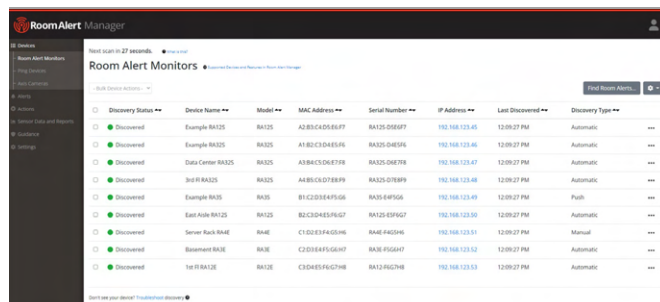
Create Customised Alerts



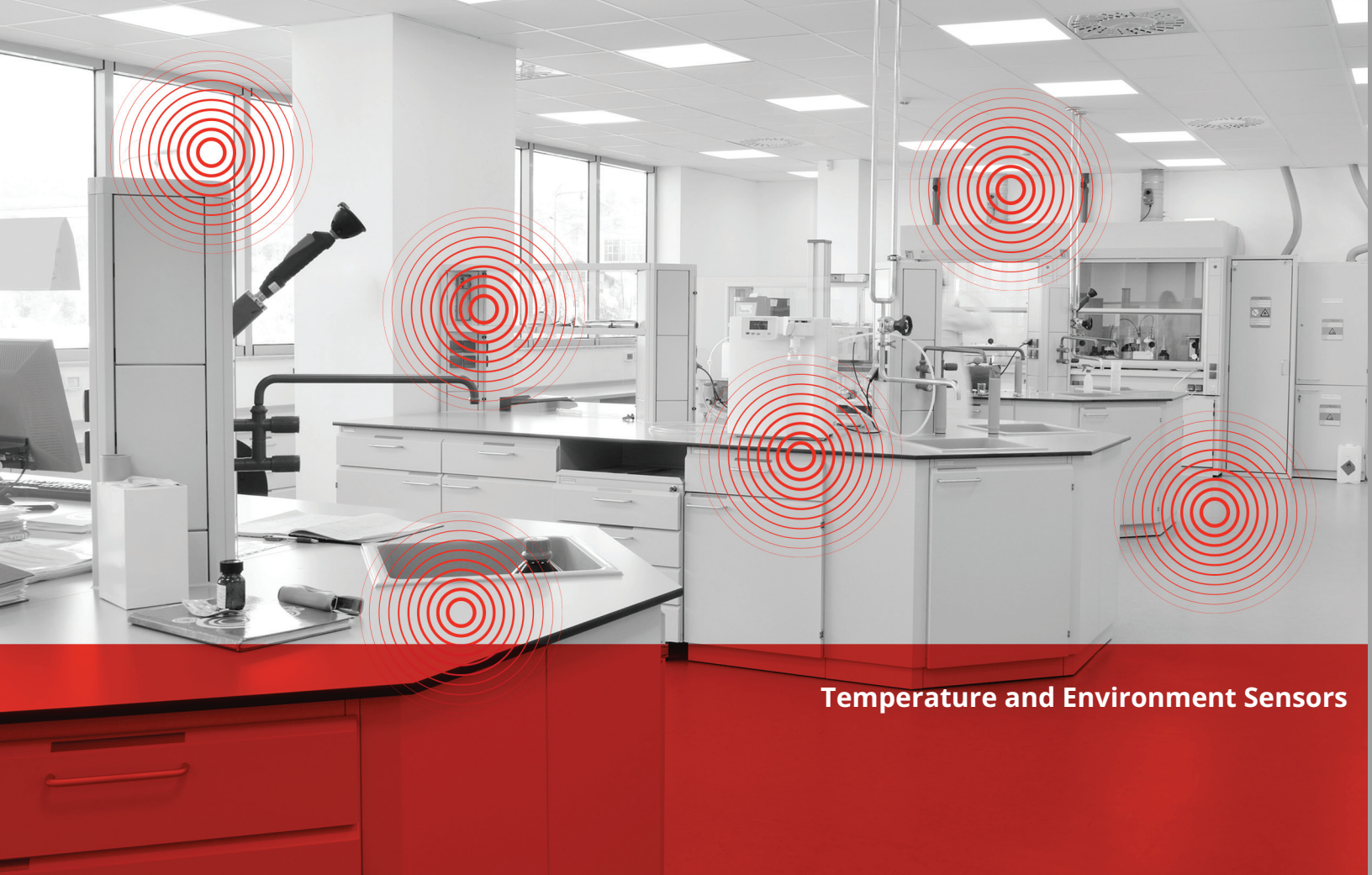
View Sensor & Monitor Status On One Screen



Manage Alerts, Reports, Historical Data and More



Easily Deploy and Manage Multiple Room Alert Monitors



Temperature and Environment Sensors

Room Alert Sensors Unlimited Expansion Capability

Every customer and situation will have their own unique monitoring needs based on their type of facility, location, and so much more. Room Alert sensors are designed to be used in nearly any combination and situation to provide maximum monitoring coverage.

Choose From Multiple Types Of Sensors

Every Room Alert monitor accepts multiple types of sensors so users can choose the exact sensors their situation calls for. All our sensors are designed for low cost and reliability. Room Alert sensors are fully supported by Room Alert hardware and software.

Customize Solutions For Your Exact Needs

Protect your people, property, and productivity by adding the specific sensors you need for your own situation to build the perfect monitoring solution for you and your organization.

We Offer a Wide Range of Sensors to Meet Every Need.

- Digital Temperature
- Digital Temp & Humidity
- Heat Index (Feels Like)
- Dew Point
- Air Flow
- Main / UPS Power
- Power Current (Amps)
- Active Power & Temperature
- Flood / Water (Cable)
- Flood / Water (Spot)
- Smoke / Fire
- Motion
- Room / Door Entry
- Analog Sensors
- Relay Switches
- Network Cameras
- Light Towers & More

**\$60**

TMP-SDT-SEN (25') \$60
 TMP-DT50-SEN (50') \$75
 TMP-DT100-SEN (100') \$90

Digital Temperature Sensor

- Real-time temperature sensor.
- Perfect for monitoring indoor temperature. Users who wish to monitor temperatures in condensing environments, such as cold storage or outdoors, should investigate some of our other options.
- Temperature range: -67 to 257° F, -55 to 125° C.
- Compatible with Room Alert 32E/W/S, 12E/S, 4E, 3E/W/S.
- Options include sensor with attached cables of 25', 50' and 100' length. Max cable distance is 100'.

INCLUDES: Digital Temperature Sensor With 25' RJ-11 Cable & Installation Note.

**\$95**

RMA-DAP-SEN (\$95)
 RMA-DAP25-SEN (\$110)
 RMA-DAP50-SEN (\$120)
 RMA-DAP100-SEN (\$145)

PATENTED

Digital Active Power w/Temperature Sensor

- Monitors active current from 100 to 1800 Watts by attaching to the power cable of an AC-powered device. No tools or cutting needed!
- Real-time temperature sensor.
- Temperature range: -40 to 185° F, -40 to 85° C.
- Compatible with Room Alert 32E/W/S, 12E/S, 4E, 3E/W/S.
- Options include sensor with attached cables of 10', 25', 50' and 100' length. Max cable distance is 100'.

INCLUDES: Digital Active Power Sensor With 10' Micro-USB to RJ-11 Cable & Installation Note.

**\$95**

RMA-DTH-SEN (25') \$95
 RMA-DTH50-SEN (50') \$110
 RMA-DTH100-SEN (100') \$125

BEST SELLER

Digital Temperature & Humidity Sensor

- Real-time temperature, humidity, dew point, and heat index (feels like). Perfect for indoor & employee safety applications.
- Temperature range: -40 to 185° F, -40 to 85° C.
- Relative humidity range: 5 to 95% non-condensing.
- Compatible with Room Alert 32E/W/S, 12E/S, 4E, 3E/W/S.
- Options include sensor with attached cables of 25', 50' and 100' length. Max cable distance is 100'.

INCLUDES: Digital Temperature & Humidity Sensor With 25' RJ-11 Cable & Installation Note.

**\$195**

RMA-DTAF-SEN

NEW

Digital Temperature & Air Flow Sensor

- Real-time temperature and air flow.
- Attach to vents, HVAC ducts, fans, and more to notify of changes in air flow and detect air flow or HVAC problems.
- Temperature range: -40 to 185° F, -40 to 85° C.
- Air speed range: 0 f/m to 2952.76 f/m (0 m/s to 15 m/s).
- Air speed accuracy: +/- 5%.
- Compatible with Room Alert 32S, 12S, 3S.

INCLUDES: Digital Temperature & Air Flow Sensor With 25' RJ-11 Cable & Installation Note.

**\$75**

TMP-DOT-SEN (25') \$75
 TMP-DOT50-SEN (50') \$90
 TMP-DOT100-SEN (100') \$105

Digital Outdoor Temperature Sensor

- Real-time temperature sensor.
- Silicon coating offers extra resilience for monitoring outdoors or in other harsh environments such as refrigerators or freezers.
- Temperature range: -67 to 257° F, -55 to 125° C.
- Compatible with Room Alert 32E/W/S, 12E/S, 4E, 3E/W/S.
- Options include sensor with attached cables of 25', 50' and 100' length. Max cable distance is 100'.

INCLUDES: Digital Outdoor Temperature Sensor With 25' RJ-11 Cable & Installation Note.

**\$105**

TMP-DFT-SEN (25') \$105
 TMP-DFT50-SEN (50') \$120
 TMP-DFT100-SEN (100') \$135

Digital Fluid Temperature Sensor

- Real-time fluid temperature sensor.
- Perfect for cooler or freezer monitoring of food, medicines and fluid temperature.
- Temperature range: -67 to 257° F, -55 to 125° C.
- Compatible with Room Alert 32E/W/S, 12E/S, 4E, 3E/W/S.
- Options include sensor with attached cables of 25', 50' and 100' length. Max cable distance is 100'.

INCLUDES: Digital Fluid Temperature Sensor With 25' RJ-11 Cable & Installation Note.



\$195
RMA-DET-SEN

Digital Extreme Temperature Sensor

- Real-time extreme temperature sensor.
- Perfect for cold storage, laboratories, or specific manufacturing environments with high temperature ranges.
- Temperature range: -328 to 932° F, -200 to 500° C.
- Stainless steel sensor tip with 40" steel lead wires.
- Max sensor cable distance up to 100', includes 25'.
- Compatible with Room Alert 32E/S, 12E/S, 4E & 3E/S manufactured in 2021 or later.

INCLUDES: Digital Extreme Temperature Sensor With 25' RJ-11 Cord & Installation Note.



\$85
RMA-PS1-SEN

Main Power Sensor

- Real-time main power on/off status to immediately alert if power is lost or changes state.
- Monitors main, UPS, single phase power, or backup generator.
- Max sensor cable distance up to 900', includes 25'.
- Compatible with Room Alert 32E/W/S, 12E/S, 4E, 3E/W/S.

INCLUDES: Main Power Sensor With 25' Cable, 5V Power Adapter & Installation Note.



\$275
RMA-F008-SEN (8') \$275
RMA-F024-SEN (24') \$375 **BEST SELLER**

Flood Sensor w/ Cable

- Real-time recognition of water/flood anywhere along the length of the patented flood cable.
- Available in either 8' Flood Cable or 24' Flood Cable with 25' RJ-11 leader cable.
- Alert triggered when sensor is activated or power lost.
- Max sensor cable distance up to 900', includes 25'.
- Compatible with Room Alert 32E/W/S, 12E/S, 4E, 3E/W/S.

INCLUDES: Flood Sensor With 8' or 24' Flood Cable & 25' RJ-11 Leader Cable, 25' Sensor Cable, 5V Power Adapter, Mounting Screws & Installation Note.



\$295
RMA-FS2-SEN

Flood Sensor (Spot)

- Real-time recognition of flood/water under pod.
- Use in basements, near drains, or low points where water may flow or pool after inclement weather or potential leaks.
- Powered by 9V Alkaline battery (included).
- Max sensor cable distance up to 900', includes 25'.
- Compatible with Room Alert 32E/W/S, 12E/S, 4E, 3E/W/S.

INCLUDES: Flood Sensor (Spot) With 25' Cable, 9V Alkaline Battery & Installation Note.



\$95
RMA-SS1-SEN

Smoke Sensor w/Escape Light

- Real-time recognition of smoke or fire.
- Audible alert and 'escape' light is triggered when sensor is activated due to smoke or fire.
- Powered by 9V Alkaline battery (included).
- Max sensor cable distance up to 900', includes 25'.
- Compatible with Room Alert 32E/W/S, 12E/S, 4E, 3E/W/S.

INCLUDES: Smoke Sensor w/Escape Light, 25' Cable, 9V Alkaline Battery, Mounting Screws & Installation Note.



\$195
RMA-MUPS-SEN

Mini UPS & Power Sensor

- Real-time main power on/off status.
- Monitors main, UPS or single phase power.
- Provides battery backup power for 15 minutes or more for any 5V device.
- Max sensor cable distance up to 900', includes 25'.
- Plugs in-line with AVTECH's 5V Power Adapter.

INCLUDES: Mini UPS & Power Sensor With 25' Cable & Installation Note.



\$125
RMA-CL1-SEN

Current Loop 1 (0-50A)

- Monitors current flowing through a single-phase powered cable.
- Monitor output: 0-10A, 0-20A & 0-50A.
- Connects via Room Alert Analog Sensor Port or Digital Temperature & Analog Sensor.
- Operates in 0 - 95% RH, non-condensing environment.
- Low-voltage 2-wire cable connection, includes 25'.
- Compatible with Room Alert 32E/W/S, 12E/S & Digital Temperature & Analog Sensor.

INCLUDES: Current Loop 1 With 25' Cable, Mounting Screws & Installation Note.



\$125
RMA-CL2-SEN

Current Loop 2 (0-250A)

- Monitors current flowing through a single-phase powered cable.
- Monitor output: 0-100A, 0-200A & 0-250A.
- Connects via Room Alert Analog Sensor Port or Digital Temperature & Analog Sensor.
- Operates in 0 - 95% RH, non-condensing environment.
- Low-voltage 2-wire cable connection, includes 25'.
- Compatible with Room Alert 32E/W/S, 12E/S & Digital Temperature & Analog Sensor.

INCLUDES: Current Loop 2 With 25' Cable, Mounting Screws & Installation Note.



\$155
IBO-IO-REL

iBoot IO

- Toggle external devices on or off based on alerts or specific environment conditions detected by Room Alert.
- Uses include automatically turning on a fan or AC in response to a high heat alert, or a sump pump in response to a water leak alert.
- Max cable distance up to 330', includes 25'.
- UL Listed Power Switch.
- Compatible with Room Alert 32E/W/S, 12E/S, 4E, 3E/S.

INCLUDES: iBoot IO With 25' Cable, Power Inlet and Out Cords & Installation Note.



\$295
IBO-G2S-SWI



iBoot G2S

- Easily and quickly add immediate remote reboot capabilities for nearly any device.
- Heartbeat feature provides automatic reboot if a network device does not respond to pings.
- Perfect for hard to reach places such as signage, closets or kiosks.
- Max cable distance up to 330', includes 25'.
- Compatible with Room Alert 32E/W/S, 12E/S, 4E, 3E/S.

INCLUDES: iBoot G2S With 25' Cable, Power Inlet and Out Cords & Installation Note.



\$245
RMA-RLAD-SEN

Relay Switch Sensor (Low Voltage)

- Allows low voltage devices to be turned on/off automatically as a response or interactively over the network.
- Four (4) device relays with visible relay status lights.
- Relays support 0.3A at 125VAC or 1A at 24VDC.
- Room Alert 32E/W/S, 12E/S & 3E require LT-32-ADP.
- Compatible with Room Alert 32E/W/S, 12E/S, 4E & 3E/S.

INCLUDES: Relay Switch Sensor With 25' Cable & Installation Note.



Scan here to visit RoomAlert.com for a full lineup of available sensors and accessories.



AVTECH... The Company You Can Count On

Every data center, server room, warehouse, cold storage, laboratory, classroom, or other type of critical facility needs to be protected against outages and potential data/asset loss resulting from environment factors.

Your organization has a number of options available to you for environment monitoring through various methods and devices. We firmly believe that AVTECH's Room Alert offers all of the qualities, options, and features required to help keep you protected in a single and complete platform. Users in over 185 countries have made the choice to rely on Room Alert for their proactive environment monitoring since 1988.

We're very proud of everything we've accomplished over the last 35 years. Many of those accomplishments are due to the relationships we've built with our users over the years, and the helpful feedback they've provided to us. Looking forward to our next 35 years has the entire AVTECH team excited about the ways we'll be able to help users across the world expand their data center, IT, and facilities environment monitoring.



"We have Room Alert at each of our 5 locations and we get alerts when the power goes out or if the air conditioning turns off and it gets too hot, helping prevent server crashes. Room Alert has saved us more than once. We love these units!"

Darlene H, Senior Support Analyst



How To Purchase

AVTECH products are available for purchase around the world and used in 187 of 196 countries. You can purchase through your favorite reseller, direct from AVTECH, or online. When ordering from AVTECH, we are happy to accept your organization's purchase order (PO), as well as payment via credit card or wire transfer. Most orders ship the same or next business day.

Resellers: Available Worldwide

Ask your favorite Reseller to contact AVTECH on your behalf. AVTECH has an established and professional network of Resellers world-wide and can recommend a local Reseller. Resellers may have local stock & can coordinate import to reduce costs.

Phone: 888.220.6700 / 401.628.1600 (9-5 EST)

Call AVTECH direct and ask to speak with a Product Specialist. They can answer questions and take your order by phone for immediate processing or provide you with an immediate PDF quote with payment link by email. If you are outside of the U.S.A. or Canada, please ask to speak with an International Product Specialist as they can address international concerns.

Online: AVTECH.com or RoomAlert.com

Place your order online for immediate processing. We can accept payment in both U.S. Dollars (USD) and Euros (EUR).

Email: Orders@RoomAlert.com

Send your organization's purchase order (PO), completed and scanned quote form or order instructions to AVTECH via email. We only accept POs in PDF format.



Follow us for tips and insights on protecting your environment.



Contact Us

AVTECH Software, Inc.
16 Cutler Street, Cutler Mill
Warren, RI 02885-2761 USA
Sales: 888.220.6700
Phone: 401.628.1600
Fax: 401.628.1601

Visit Us Online

AVTECH.com
RoomAlert.com

Most Orders Ship the Same or Next Business Day. Import Duties and Taxes are the Responsibility of Recipient.

Trademarks

© Copyright 1988-2024
AVTECH Software, Inc.
All Rights Reserved Worldwide.
AVTECH, AVTECH Software
AVTECH.com, AVTECHSoftware.com,
'Environment Monitoring Made Easy!'
'Protect Your Facility... Don't Wait Until It's Too Late!'
Room Alert, RoomAlert.com,
Monitor360, Room Alert Account, & Room Alert Manager.

Privacy Promise

AVTECH does not sell or share your email or other contact information, however, AVTECH uses some email marketing because our prospects and customers consider it important and convenient. When we do, AVTECH provides customers with an easy means to decline further email of that type.

Current Versions

To confirm your organization is running current software and firmware versions or to download these versions for any licensed AVTECH product, log in at RoomAlert.com and use your non-expiring account to look for the 'Current Versions' box on the 'Downloads' page, then update your Room Alert monitor firmware for free.

Why Room Alert?

Trusted

With over a million users located in over 185 countries, our reliability and performance are highly valued, worldwide.

Easy

"Plug and play," "Set it and forget it." By any metric, in every environment, we're up and running for you on Day One.

Expert

Decades of experience have resulted in a platform and products that set the standard for superior quality.

Protecting

We're actively dedicated to maintaining business continuity in hundreds of industries in any and all of its forms.

Caring

Your satisfaction is our success, and we're here - in person - to ensure it. You can count on Room Alert!



Room Alert is a secure, award-winning platform that is designed to be ready to protect your facility within minutes of installation. Our countless online resources, product specialists and support team are here to assist with whatever monitoring needs you might have.



US Headquarters

16 Cutler Street, Cutler Mill
Warren, RI 02885-2761 USA

International Distribution

Unit 105, Bay 0
Shannon Free Zone West
Shannon, Co Clare, Ireland

888.220.6700 / 401.628.1600
AVTECH.com / RoomAlert.com