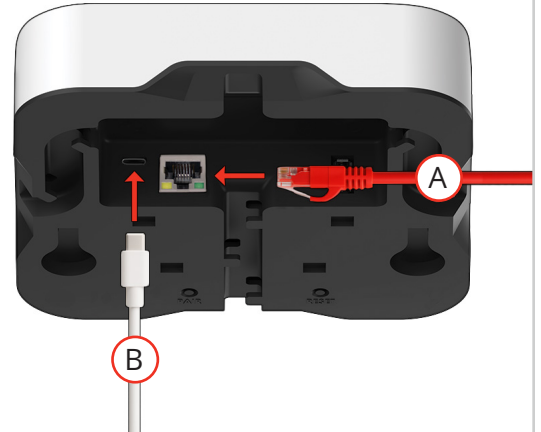


Room Alert MAX QUICK START GUIDE

For optimal wireless connectivity, set up your MAX Base Station & Sensors and test signal before mounting.

1. First, connect the Base Station to your network.

- A. Connect the Base Station to Ethernet.
- B. If your network is not Power over Ethernet (PoE) enabled, plug the Room Alert MAX 2A Power Adapter into the USB-C power port.



2. Next, wait for the Base Station to boot up.

When first powered, a **blue LED** on the front of the Base Station flashes for a few seconds, and then turns solid for approximately 90 seconds.

Once the LED turns off, the device can be discovered on your network.

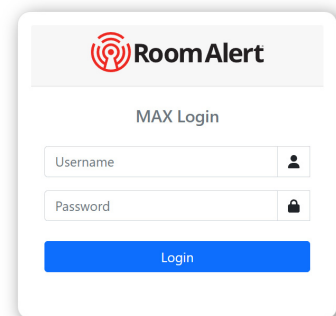


3. Then, open the Room Alert MAX web interface.

To access the interface, type the Base Station's IP address directly into the address bar of your web browser.

Discover the device's IP address via:
- **Room Alert Account** or **mobile app**
- **Room Alert Discovery Utility**

Default IP on non-DHCP network
169.254.100.44



Default credentials
admin & password

Through the web interface, you can pair sensors, configure Wi-Fi, set up alerts, and more.

For more information, please see the [product manual](https://avtech.com/support) available at avtech.com/support.